

# The Communities in Puslinch

Prepared by the Puslinch Historical Society

2015

# 1861 Township Map of Puslinch



This map is located on the wall of the Puslinch Historical Society's archive room.

The original oilcloth Leslie map of the County of Wellington, from which this map was extracted, is in the lunchroom of the Township Offices. It was published in Orangeville.

A copy can also be found in the Historical Society's millennium publication, *Puslinch Profiles*.



# Former School Sections



- S.S. # 1 Arkell
- S.S. # 2 Brock Road
- S.S. # 3 Downey
- S.S. # 4 Aberfoyle
- S.S. # 5 3<sup>rd</sup> Concession
- S.S. # 6 Crieff
- S.S. # 7 Killeen
- S.S. # 8 Morryston
- S.S. # 9 Badenoch
- S.S. # 10 Corwhin
- S.S. # 11 Puslinch Lake
- S.S. # 12 Glenchristie



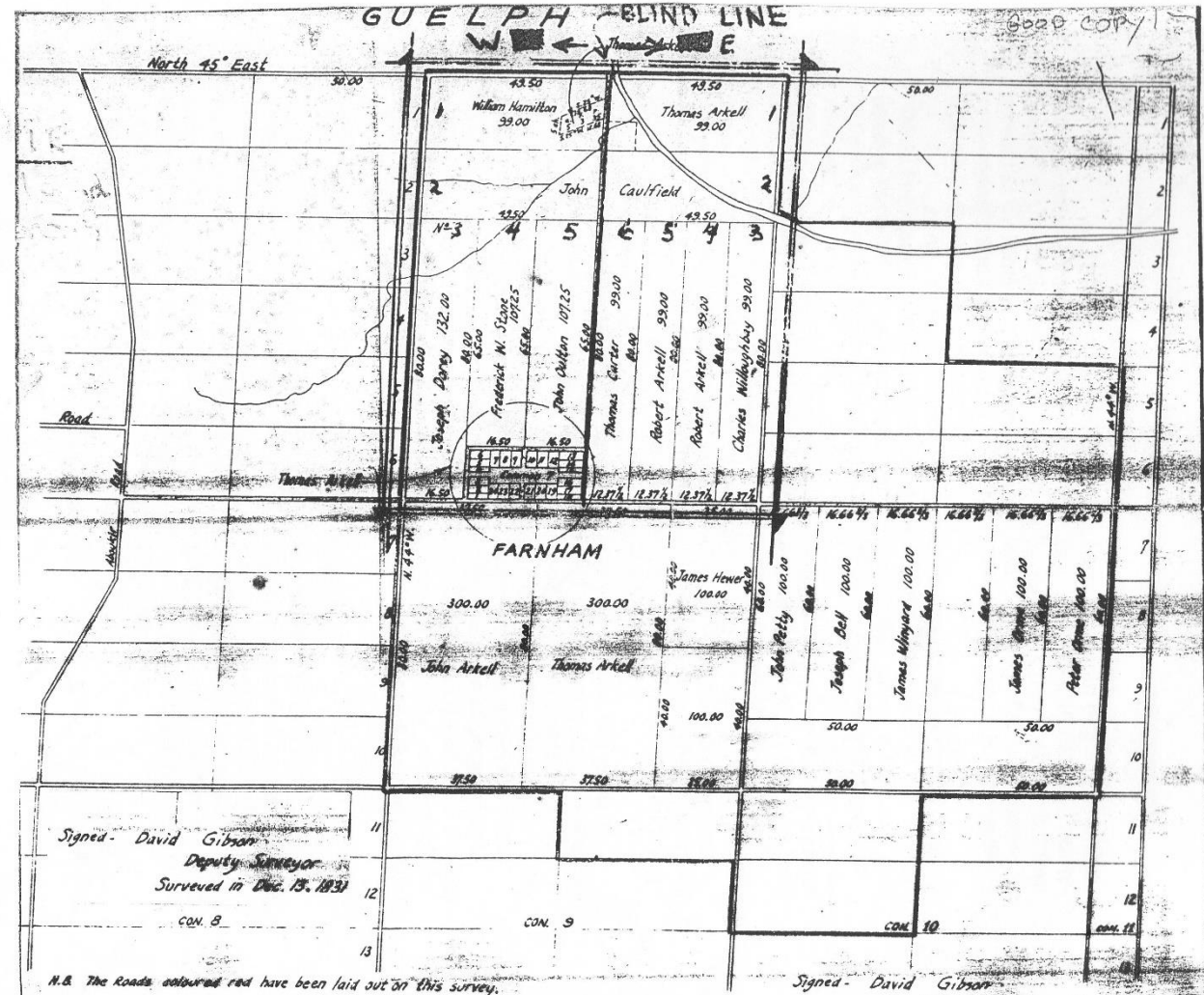
This is a historical map of Farnham, Virginia, showing land parcels and owner names. A large white arrow points to a parcel owned by 'Thos Arkell'.

**Map Labels (Owner Names):**

- Top Row:** William Allan, John Gordon, John Fullen, John Hamilton, John Churchland, John Allen, John Leach, John R. Cook, John Scott.
- Second Row:** John Hamilton, John Arkell, John Gordon, John Fullen, John Hamilton, John Churchland, John Allen, John Leach, John R. Cook, John Scott.
- Third Row:** John Hamilton, John Arkell, John Gordon, John Fullen, John Hamilton, John Churchland, John Allen, John Leach, John R. Cook, John Scott.
- Fourth Row:** John Hamilton, John Arkell, John Gordon, John Fullen, John Hamilton, John Churchland, John Allen, John Leach, John R. Cook, John Scott.
- Fifth Row:** John Hamilton, John Arkell, John Gordon, John Fullen, John Hamilton, John Churchland, John Allen, John Leach, John R. Cook, John Scott.
- Sixth Row:** John Hamilton, John Arkell, John Gordon, John Fullen, John Hamilton, John Churchland, John Allen, John Leach, John R. Cook, John Scott.
- Seventh Row:** John Hamilton, John Arkell, John Gordon, John Fullen, John Hamilton, John Churchland, John Allen, John Leach, John R. Cook, John Scott.
- Eighth Row:** John Hamilton, John Arkell, John Gordon, John Fullen, John Hamilton, John Churchland, John Allen, John Leach, John R. Cook, John Scott.
- Ninth Row:** John Hamilton, John Arkell, John Gordon, John Fullen, John Hamilton, John Churchland, John Allen, John Leach, John R. Cook, John Scott.
- Tenth Row:** John Hamilton, John Arkell, John Gordon, John Fullen, John Hamilton, John Churchland, John Allen, John Leach, John R. Cook, John Scott.

**Map Features:**

- Water:** A large body of water is labeled 'FARNHAM'.
- Arrows:** A large white arrow points to a parcel owned by 'Thos Arkell'.
- Other Labels:** 'John Hamilton', 'John Arkell', 'John Gordon', 'John Fullen', 'John Hamilton', 'John Churchland', 'John Allen', 'John Leach', 'John R. Cook', 'John Scott'.

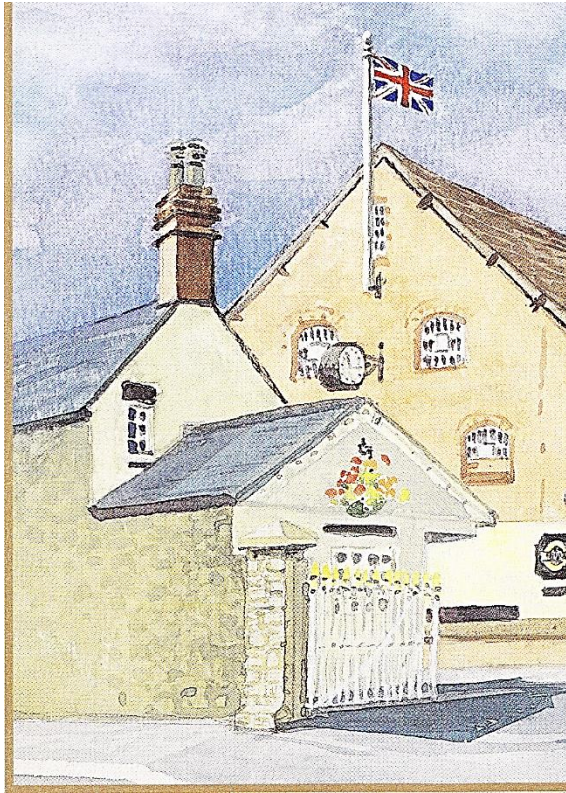




# AN ENGLISH SETTLEMENT

## Arkell / Farnham Plains

John Arkell and his brewery at Kingsdown, Swindon England.



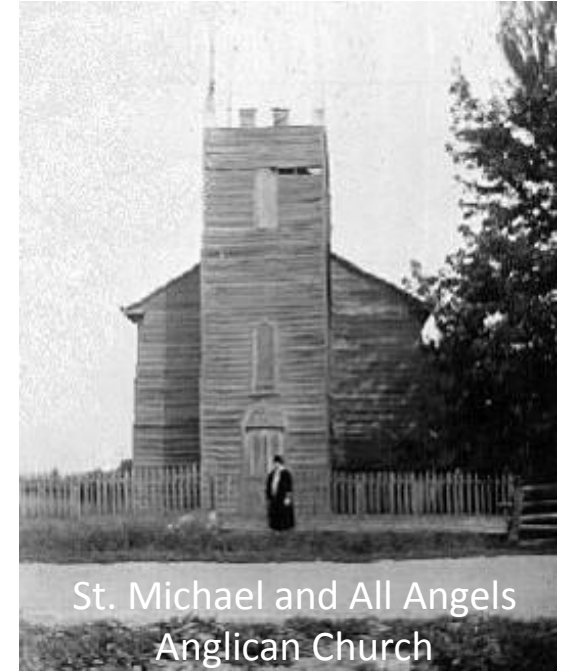
John Arkell  
1801 - 1881



Thomas Arkell and 1852 five-bay  
Georgian stone house above.



THOMAS ARKELL OF FARNHAM FARM 1803-1875



St. Michael and All Angels  
Anglican Church  
– no longer standing.



Early view of the village from E end.





The Haines log house, Lot 7, F. Conc. 9.  
– no longer standing



Peter Isles in front of first church.

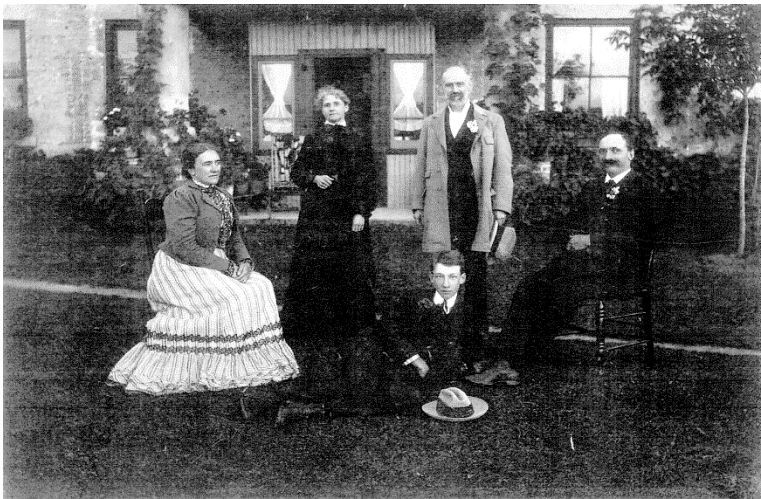
# Pioneers



F.W. Stone whose land  
became part of the O.A.C.



John Starkey and son.



Henry and Jessie Arkell, seated.



Our Lady of the Wall

The Carter  
homestead, right.



Carter Homestead  
Betty and William Howitt and friend.  
Picture courtesy of Pat Patock



# Farmsteads



James Orme  
homestead.



David and Alice, Ritchie, Gordon, below.  
David was the son of John Gordon of Lot  
1, Conc. 10 where the first telephone  
was installed in Puslinch.



Lot 1, Conc. 10 – Mount Prospect



Pt. Lots 7,8,9 R. Conc. 10



Pt. Lot 7,8,9 F. & R. Conc. 10



Iles/Jefferson  
farmstead



Pt. Lots 3,4,5 F. Conc. 9

Today there is a hiking trail on  
the Starkey farm, used for a  
sunrise service at Easter.



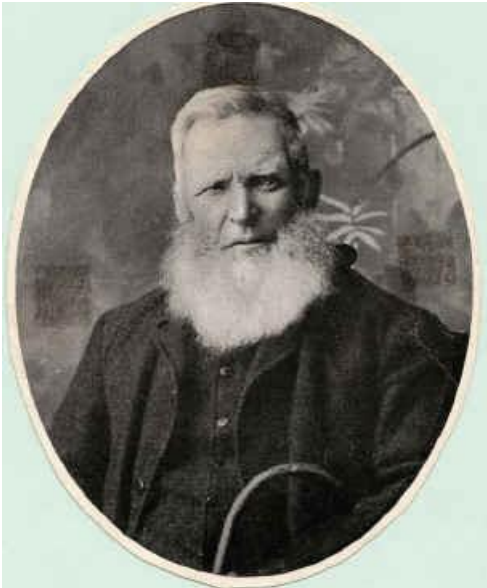


# Arkell Village

Below: School Section 4 former  
Schoolhouse and teacherage.



Arkell Store and Post Office



James Scott of Lot 6, Conc. 10



Charles and Mary, Wilkins, Willoughby  
donated the land for Arkell Church.



Arkell United Church, originally Plains Wesleyan Methodist.





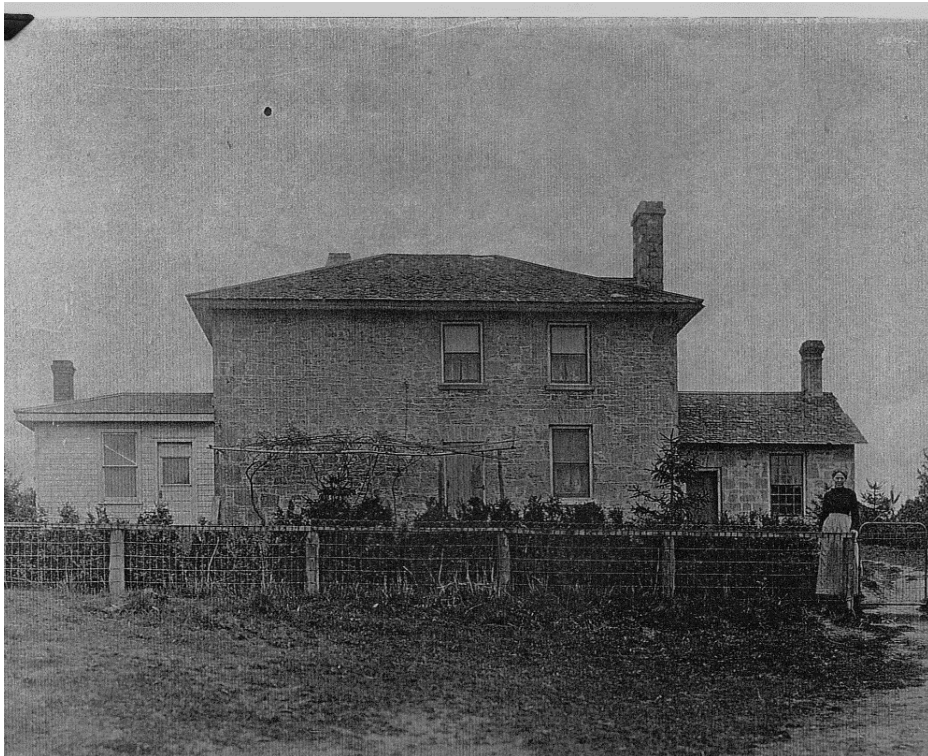
# Village Artisans



1842 hand-forged door latch  
in Thos. Arkell's house.



BLACKSMITHS



EARLY MASONS & CARPENTERS



George Nichol's blacksmith shop



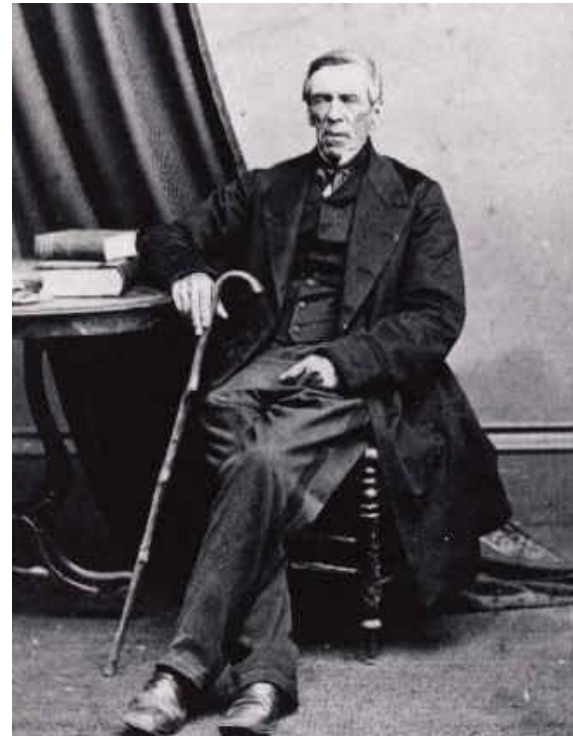
# Pioneer Industry



Arkell train station and weigh scales played an important role for farmers.

John Caulfield erected the first sawmill and he and the Arkells were local industry pioneers.

All that remains from the Arkell Woolen Mill's days of processing wool is this former wool storage shed.



Known as Cook's Mill after the second family to own the sawmill, all that can be seen today are some remains of the dam along the Speed River.







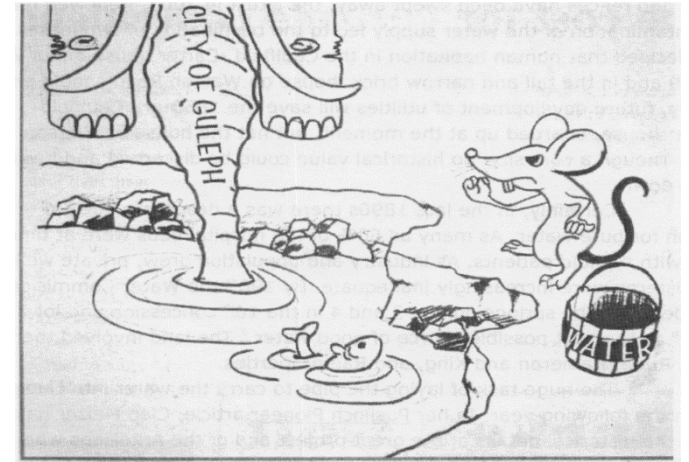
Arthur Byrnes farmhouse with housing filling in behind.

ARKELL CROSSING  
Victoria Rd. at Arkell Rd.



# CHANGING TIMES

## Guelph takes Arkell Springs for Its Water



Source: Nor-Halton Compass, December 5th  
2003.

## U. of G. Research Farm on Arkell & Haines Farms

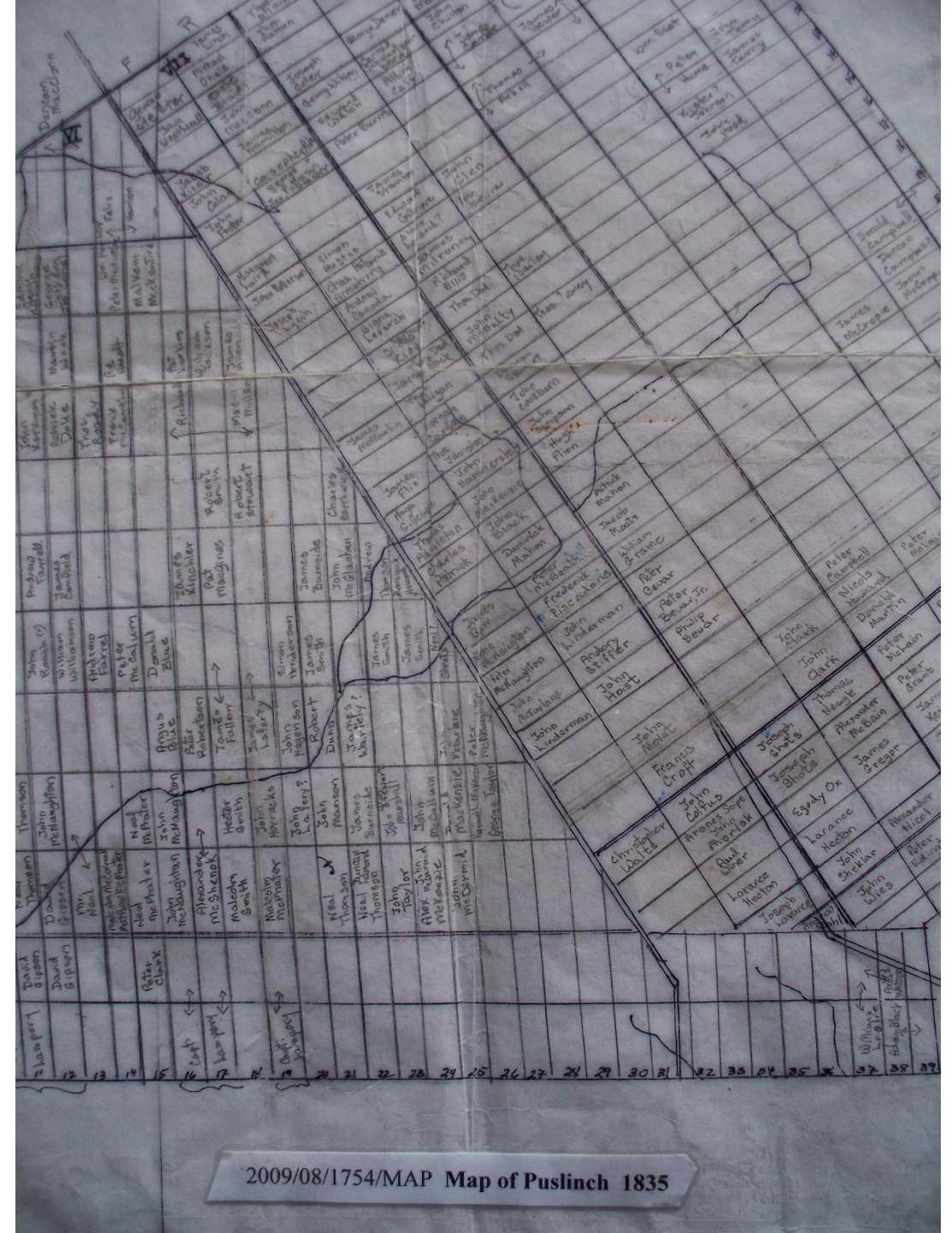




# Brock Road Area

In 1828, David Gibson P.L.S. began the survey of Puslinch, pushing settlement further north from the Great Lakes beyond the Flamboroughs. With John Galt's newly established town site at Guelph, a road was needed to connect the town to Dundas where many settlers were arriving via Lake Ontario and the Desjardins Canal. The second part of Gibson's survey started in 1831.

By 1835, almost all of the farms along the Aboukir/Brock Rd. were taken, while the back concessions remained empty.









# Backbone of Puslinch

Up and down the Brock Road, log homesteads and early shops and inns sprang up. By the 1851 census there were 15 stone houses recorded, with many more frame buildings by then. While those that remain have been remodelled, their early bones have survived.



Robert Johnston, an Oxford University graduate, built this early stone house S of the Hammersley farm. Lot 18, F. 8 (remodelled in 20<sup>th</sup> Century)

The original log house and barn from the Cassin farm were moved to the Agricultural Museum at Milton.



Martin Cassin homestead, Lot 17, R. Conc. 9



# Township Administration



**Lot 18, R. Conc. 7**

An official town hall was not constructed until 1867. Until then township meetings were held in local inns. The first recorded was held at McMeekin's log inn on the W side of Brock Road, just N of Aberfoyle. The large crowd gathered for the election of the local council saw the meeting move to the larger barn on the property, where officials sat on the swing beam above the crowd to conduct business.



**Ingram's Inn, Lot 18, R. Conc. 7 Gordon Couling slide, courtesy Wellington Co. Museum and Archives**

McMeekin built a frame inn next and later sold it to Thomas Ingram. After a fire in 1860, Ingram replaced the inn with a stucco structure, similar to the buildings he had known back home in Ireland. Today the building is covered in aluminum siding and hardly recognizable. The hill leading up to the inn was referred to as Ingram's Hill by locals well into the 20<sup>th</sup> Century.

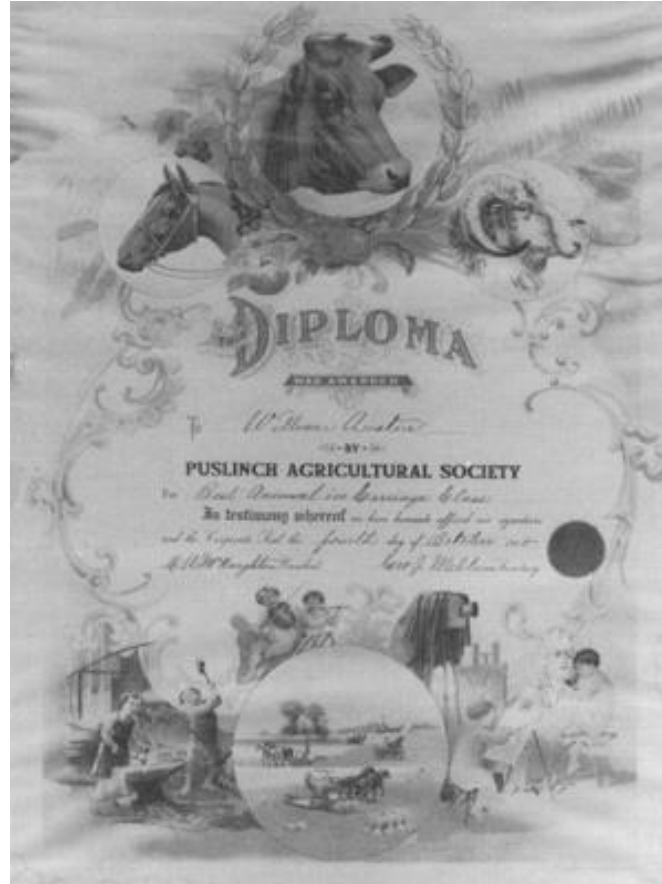




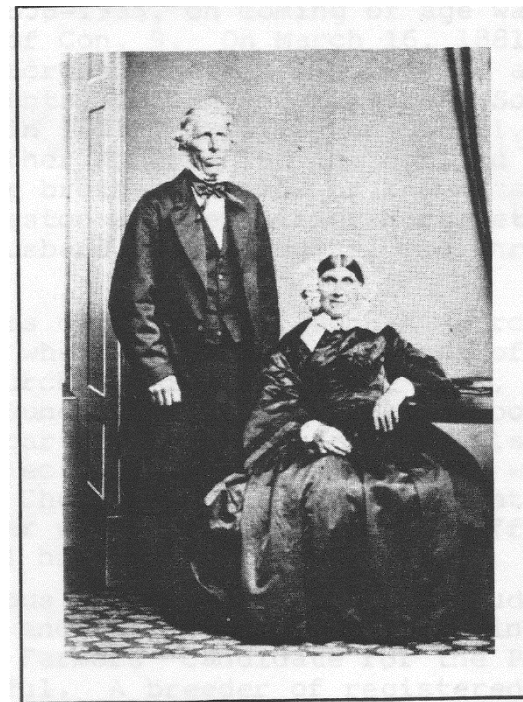
**Duncan McFarlane**

Duncan McFarlane's father John, storekeeper N of Aberfoyle, gave the village its name after his home area in Scotland.

# PIONEERS



THE EARLIEST RECORDED PRIZE LIST of the PUSLINCH AGRICULTURAL SOCIETY was 1847. The competitions were held in a field north of Aberfoyle on land owned by John McFarlane, storekeeper, and later by John Hammmersley.



John Cockburn & Janet Todd  
1826

**1st. Reeve of Puslinch**  
John Cockburn and family originally farmed Lot 19, F. Conc. 8; then R. Lot 19 and lots 17 and 18, R. Conc. 8, and Lots 19 & 20 F. Conc. 9

**John Hammersley and his wife Elizabeth, nee Gell.**



**1<sup>st</sup> Clerk of the Township**

John Hammersley is listed as Clerk in the 1844 publication of the Legislative Assembly of Upper Canada.

**Hugh Cockburn**, John's brother, farmed Lot 16, R. Conc. 8 which eventually became the John Jeffrey farm.





# Yesterday and Today



## **Blair Farm**

TODAY IMAT (International  
Association for Medical  
Assistance)



## **Hamilton's Corners**

TODAY at GORDON STREET and ARKELL  
ROAD



## **Barn on Laird Farm**

The crossroad on Gordon Street north of  
Maltby Road was named after this farm family.



# A SUBDIVISION BASED ON HISTORY: CLAIRFIELDS



Reid's Heritage Group carefully replicated two farmhouses they were taking down to create a new subdivision in 2002. The pioneering Clair and "Brock Road" Hanlon\* families' homes will live on for another century, as well as a tribute to the former Hanlon pig barn.

- Puslinch had two pioneering Hanlon families. The Felix Hanlon family arrived with John Galt in 1827 and settled on Conc.6 in the Kortright area. "Brock Road" Hanlons was used to distinguish between the two.
- After Oren Reid's untimely death, the Reid's Heritage Group created a nature trail named after him that begins at the former Hanlon pig barn foundations.





# Changing Times



William Graham farmhouse - now clubhouse at Springfield Golf & Country Club.



Orton Maltby farm and former meat market - now Milburn's Auto Sales.

Brock Road north of Maltby Road has been incorporated into the City of Guelph and renamed Gordon Street.



S. S. # 2 Brock Road schoolhouse – now Wellington Centre for Continuing Education.



The former Brock Road (today Gordon Street) – now lined with townhouses, condos and commercial strips.





# School Section 3

## Pioneers in 1861



Felix Hanlon immigrated from Co. Monahan in his 20s, single in June 1827 – purchased 500 acres , Lots 12-16, Conc. 6, Puslinch in 1833.



Felix Hanlon (1802 - 1882).

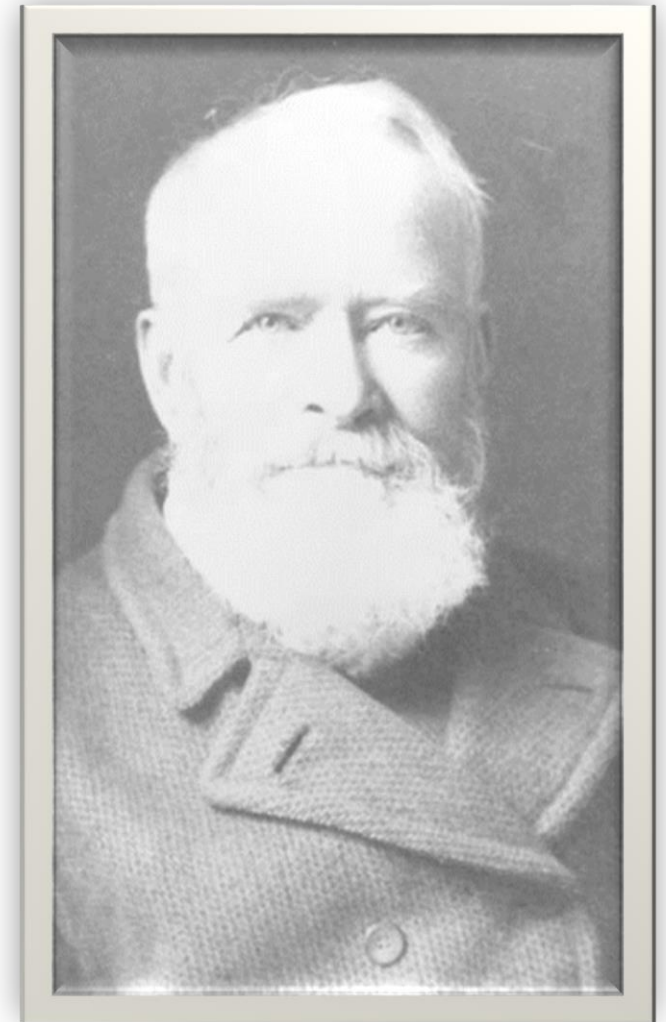
Hanlon, Carrol, Collins, Crawley, Dooley,  
Downey, Doyle, Kinsella, Lynch, McGarr,  
Phelan  
– this was predominantly

## AN IRISH SETTLEMENT



**S. S. # 4 Downey School**

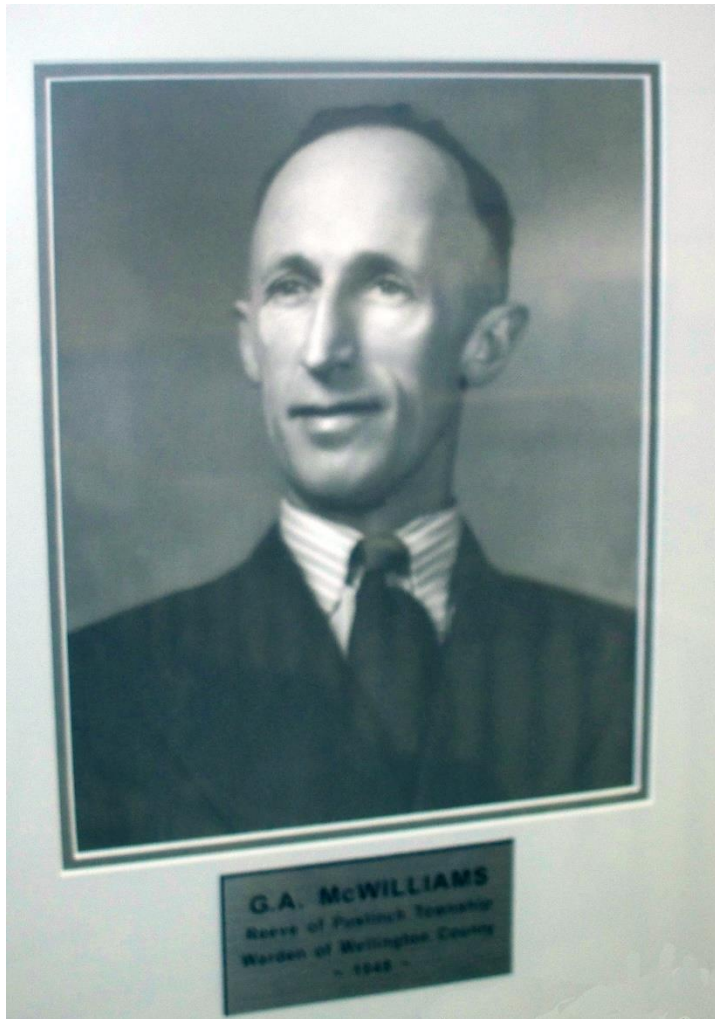
Patrick Downey was born in Cork, Ireland in 1820 and came to the log school in section 4 to teach in 1844.



Patrick McGarr b. 1829 in Guelph where his parents had immigrated in 1827. He worked for John Howitt of Puslinch after age 13 and later bought the Crawley farm on Conc. 7.



In 1948, *Albert McWilliams* became the first Warden of Wellington County from School Section 4. He was a 4<sup>th</sup> generation descendant of Charles, the first assessor in Puslinch, who purchased Lots 17-19, F. Conc. 5 in 1832.



G.A. McWILLIAMS  
Reeve of Puslinch Township  
Warden of Wellington County  
- 1948 -

# Strachan's Corners

There was a mix of Scots and English sprinkled in with the Irish:

Maddock, McLennan, Parker,  
Patterson, Thomson and Strachan.



Strachan/Barclay farmhouse, Lot 15, R. Conc. 4



# CHANGING TIMES



The red brick Mollison farmhouse is now part of a townhouse complex named “Hanlon Creek” on Downey Road – the complex named for the creek that runs below the farmhouse.



The Felix Hanlon farmstead is now surrounded by housing in the south end of the City of Guelph and the Hanlon name is found in “Hanlon Creek”, “the Hanlon Business Park”, “Hanlon Creek Boulevard” and “the Hanlon Expressway”.





ULTIMATE FATE?

In 2001, the **Hanlon Creek Business Park** development began west of the Hanlon Expressway and north of Forestell Road.



LEVELLING THE FARMS W. of HANLON PARKWAY



1861 MAP

The map shows a grid of land parcels with owner names. A large white 'X' is drawn over the map, and a black arrow points to the parcel owned by John Black. The map is titled '1861 MAP' in the top left corner.

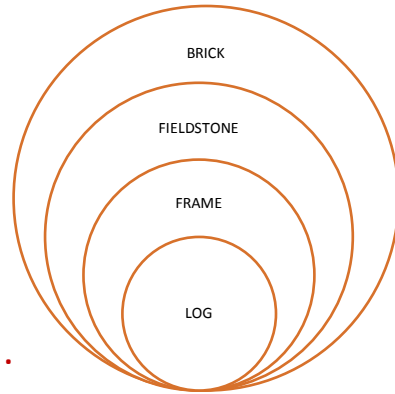
Parcel	Owner
Parcel 1	John Black
Parcel 2	John Black
Parcel 3	John Black
Parcel 4	John Black
Parcel 5	John Black
Parcel 6	John Black
Parcel 7	John Black
Parcel 8	John Black
Parcel 9	John Black
Parcel 10	John Black
Parcel 11	John Black
Parcel 12	John Black
Parcel 13	John Black
Parcel 14	John Black
Parcel 15	John Black
Parcel 16	John Black
Parcel 17	John Black
Parcel 18	John Black
Parcel 19	John Black
Parcel 20	John Black
Parcel 21	John Black
Parcel 22	John Black
Parcel 23	John Black
Parcel 24	John Black
Parcel 25	John Black
Parcel 26	John Black
Parcel 27	John Black
Parcel 28	John Black
Parcel 29	John Black
Parcel 30	John Black
Parcel 31	John Black
Parcel 32	John Black
Parcel 33	John Black
Parcel 34	John Black
Parcel 35	John Black
Parcel 36	John Black
Parcel 37	John Black
Parcel 38	John Black
Parcel 39	John Black
Parcel 40	John Black
Parcel 41	John Black
Parcel 42	John Black
Parcel 43	John Black
Parcel 44	John Black
Parcel 45	John Black
Parcel 46	John Black
Parcel 47	John Black
Parcel 48	John Black
Parcel 49	John Black
Parcel 50	John Black
Parcel 51	John Black
Parcel 52	John Black
Parcel 53	John Black
Parcel 54	John Black
Parcel 55	John Black
Parcel 56	John Black
Parcel 57	John Black
Parcel 58	John Black
Parcel 59	John Black
Parcel 60	John Black
Parcel 61	John Black
Parcel 62	John Black
Parcel 63	John Black
Parcel 64	John Black
Parcel 65	John Black
Parcel 66	John Black
Parcel 67	John Black
Parcel 68	John Black
Parcel 69	John Black
Parcel 70	John Black
Parcel 71	John Black
Parcel 72	John Black
Parcel 73	John Black
Parcel 74	John Black
Parcel 75	John Black
Parcel 76	John Black
Parcel 77	John Black
Parcel 78	John Black
Parcel 79	John Black
Parcel 80	John Black
Parcel 81	John Black
Parcel 82	John Black
Parcel 83	John Black
Parcel 84	John Black
Parcel 85	John Black
Parcel 86	John Black
Parcel 87	John Black
Parcel 88	John Black
Parcel 89	John Black
Parcel 90	John Black
Parcel 91	John Black
Parcel 92	John Black
Parcel 93	John Black
Parcel 94	John Black
Parcel 95	John Black
Parcel 96	John Black
Parcel 97	John Black
Parcel 98	John Black
Parcel 99	John Black
Parcel 100	John Black

# The Community of Aberfoyle

# School Section 4



*THERE HAVE BEEN 4  
SCHOOLS IN ABERFOYLE.*



No picture of the log  
school has been found.

# SCHOOLS and CHURCH



Former STONE S.S. # 4 on Lot 18, R. 7  
- now a commercial site in the village.

PRIMITIVE METHODIST/UNITED CHURCH –  
today a commercial enterprise.



Former FRAME S.S. # 4 on Lot 18, F. 8 Still  
standing today - a private home.

By 1969 when county school boards were formed, all of the Puslinch  
school sections were consolidated and students bused to the current  
ABERFOYLE PUBLIC SCHOOL.



# PIONEER FAMILIES

Hammersleys



McBeaths



Ellises



Blacks

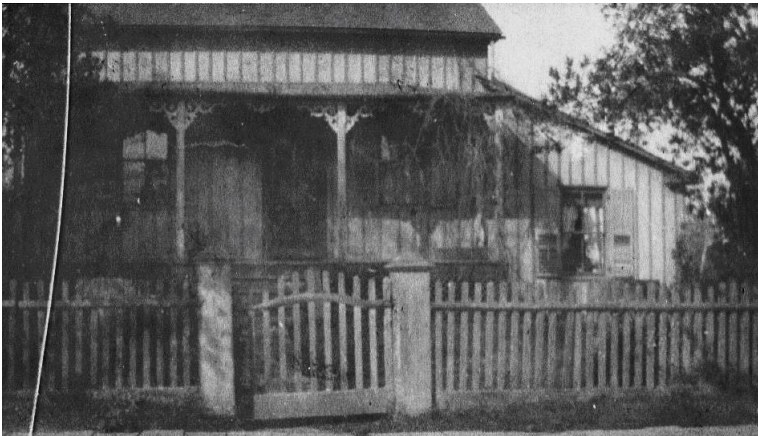


Children from  
farms N. and S.  
of the village  
also attended  
S.S.#4.

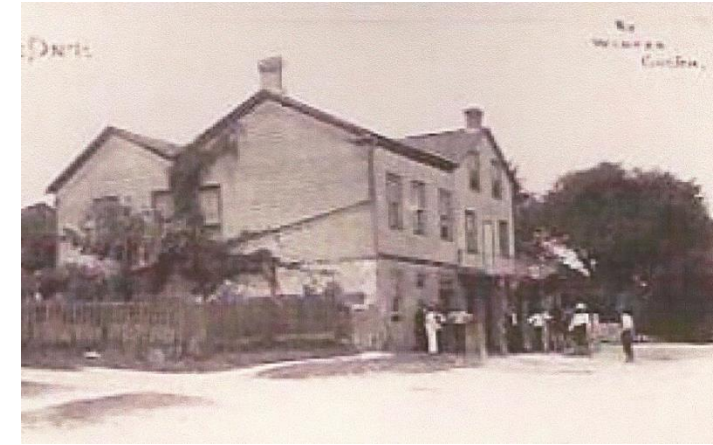


# The Heart of Township Affairs

The MILLER'S HOUSE was inherited by the last miller's daughter, Miss Murphy, and is now a commercial site in Aberfoyle.



The former TOWNSHIP HALL was moved to the Agricultural Museum at Milton when the COMMUNITY CENTRE replaced it.



Early picture of the ABERFOYLE MILL.



TOM MALTBY & TEAM  
in front of Aberfoyle Mill  
(J. Murphy Prop. Centre)

The ABERFOYLE HOTEL burned to the ground in 1938.

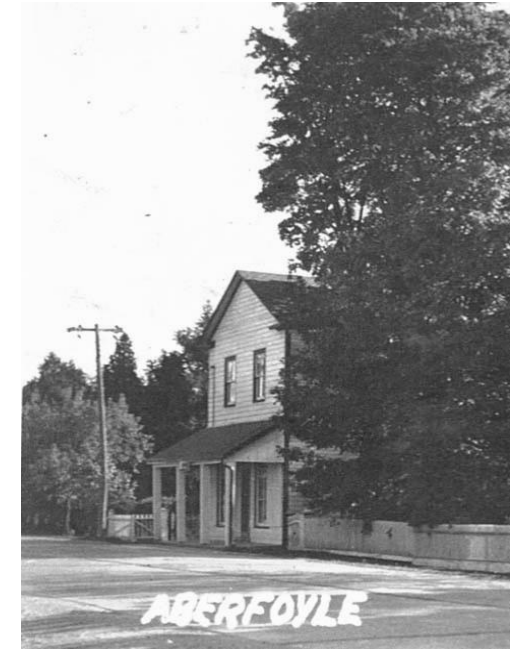
Postcard was from early 1900 when Ignatius Lehman (in white apron) was proprietor.





# VILLAGE COMMERCE

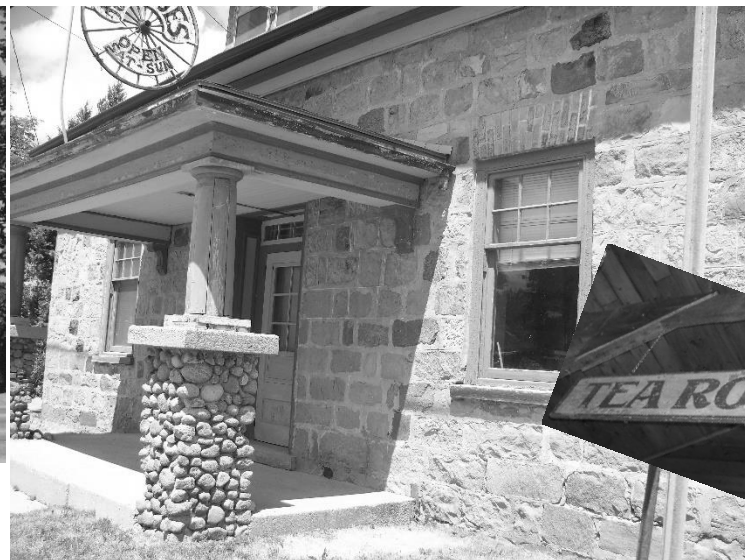
Blacksmith and Wagon Shops



McLean sisters' store  
- no longer standing



Falconbridge/Lewis/Neustad store, above



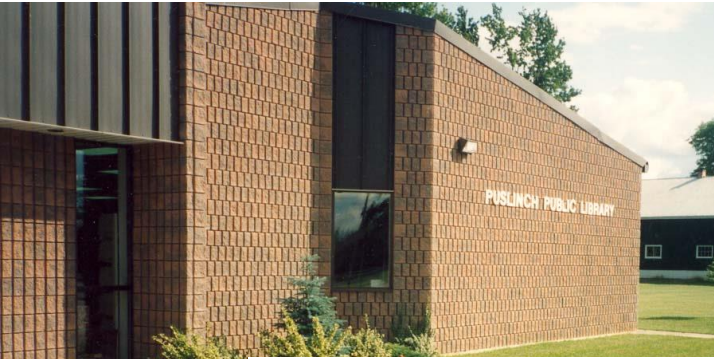
Formerly  
Clara  
King's  
tearoom.



Boarded up  
window of  
butcher shop.



# ABERFOYLE CONTINUES AS THE HEART OF PUSLINCH





# CHANGING TIMES



GO/Greyhound Bus Terminal



Aberfoyle Mill Restaurant and Flea Market



Maple Leaf Foods Distribution Centre

Accents for Living – furniture & design



Nestle Water's Corporate Centre



Dufferin Aggregates Pit Entrance



# Puslinch Communities from A to T

If you were asked about the former smaller communities within Puslinch could you tell someone where to find ALL of these?

Aberfoyle  
Aikensville  
Arkell  
Badenoch  
Brock Road  
Corwhin  
Crieff  
Downey  
Elgin  
Farnham Plains  
Frazerville  
Glen Christie  
Killeen  
Morrison  
Paddock's Corners  
Puslinch Lake  
Schaw Station  
Strachan's Corners  
The Third